



UNIVERSITY

TAEJAE





In September 2023,

Taejae University embarked on a groundbreaking journey  
to redefine the paradigm of higher education in the 21<sup>st</sup> century.

We serve as a cradle for creative talents poised to design the future,  
a home for critical thinkers committed to fostering a harmonious human community,  
and a hub for global leaders dedicated to leading a new sustainable digital civilization.



THE

NEXT



ANSW





In the 21<sup>st</sup> century, our global society is undergoing profound digital transformation across all aspects, reshaping politics, society, economy, and culture. This substantial evolution underscores the importance of global harmony as we progress towards an increasingly interconnected world, where our destinies are intertwined.

At Taejae University, we stand as pioneers of educational innovation, envisioning a future where higher education transcends boundaries and embraces transformative change. Embracing the ethos encapsulated in "The Next Answer", we are steadfast in our mission to nurture innovative and self-directed talents who will be the next answer for a better future society.

Our unique approach to education fosters active learning, departing from the traditional lecture-style education of the past century. Classes are intimate, with fewer than 20 students, encouraging vibrant discussions and collaborative problem-solving, guided by world-class professors from diverse corners of the globe without the constraint of location.

We recognize that personalized guidance and support are essential for unlocking student success. Through this tailored approach, we empower our students to maximize their individual potential. By engaging with diverse global perspectives from Korea, the United States, China, Japan, Russia, and Europe, our students develop the skills and insights required to excel on the world stage.

Join us at Taejae University, where innovation converges with education, and together, we will shape a brighter future for generations to come.

A stylized, handwritten signature in black ink, which appears to read 'Jaeho Yeom'.

**Jaeho Yeom**  
**President, Taejae University**



# About Taejae

Nurturing Global Leaders for the 21<sup>st</sup> Century





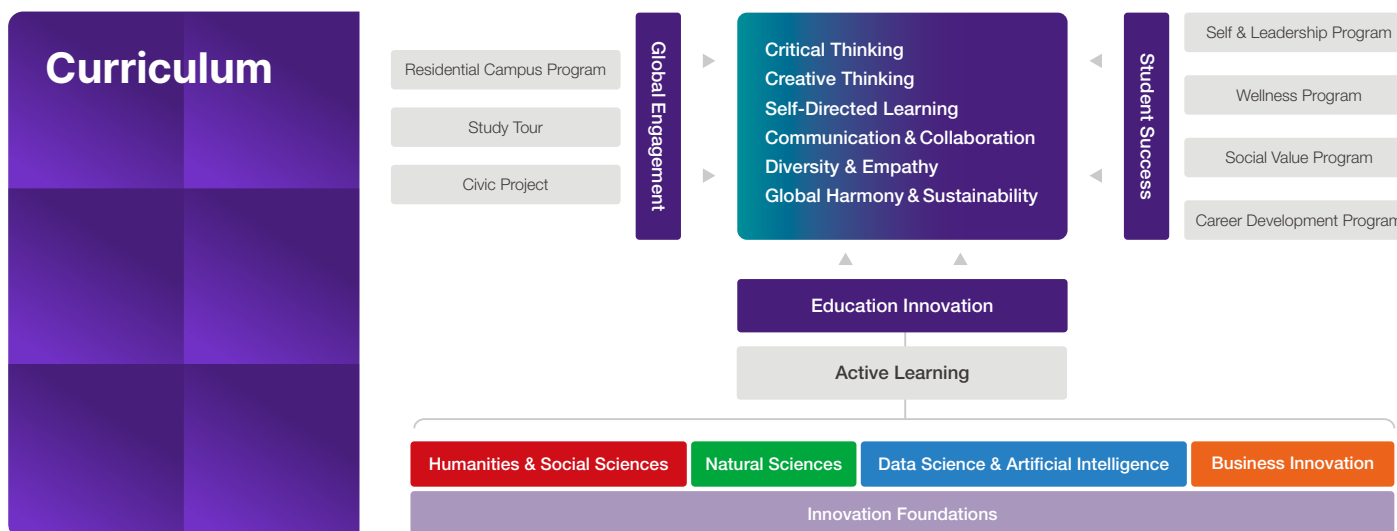
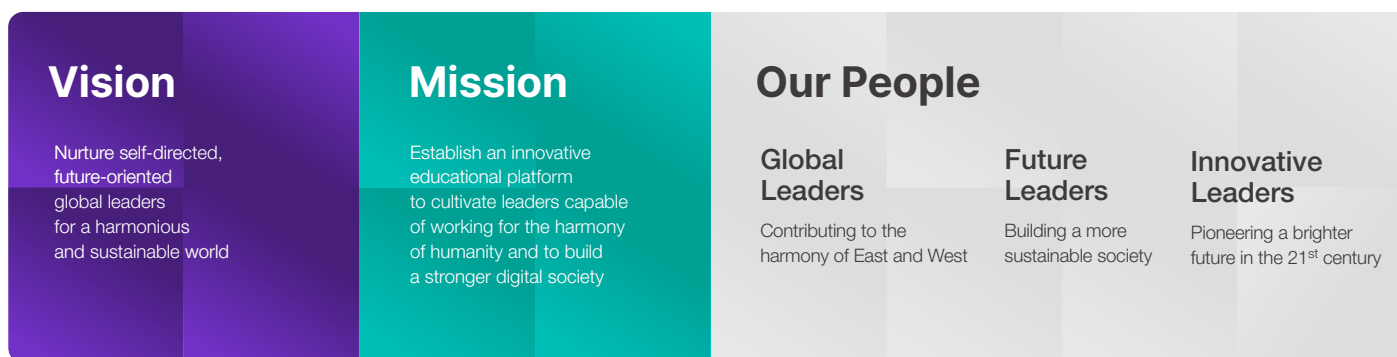


Welcome to Taejae University, where our vision is to nurture self-directed, future-oriented global leaders committed to creating a harmonious and sustainable world. We are passionate about developing leaders who not only conceive of change but also spearhead innovative solutions to improve societies worldwide.

Our mission is clear: to establish an innovative educational platform that cultivates individuals capable of promoting harmony among humanity and leading a sustainable digital society. To realize this mission, our curriculum goes through a rigorous design and development process, facilitated by collaboration among our esteemed faculty, internal education innovation experts, and a curriculum review committee comprising external scholars and professionals. This ensures that our comprehensive curriculum is finely tuned to instill students with the six key competencies essential for leadership in the digital era, as envisioned by Taejae University.

In addition to our five renowned schools, Taejae University takes extraordinary measures to mold students into well-rounded future leaders. Through the establishment of three specialized student support organizations led by distinguished professors and experts—the Education Innovation Institute, Global Initiative Institute, and Student Success Institute—we offer tailored support, which distinguishes Taejae University.

We are committed to nurturing our students into future leaders who transcend cultural boundaries, advocate for sustainability, and drive innovation in the 21<sup>st</sup> century. Anyone who seeks to enhance their self-directed learning skills in a rapidly changing society and to grow into a leader is welcome to knock on the doors of Taejae University, a trailblazer in educational innovation.

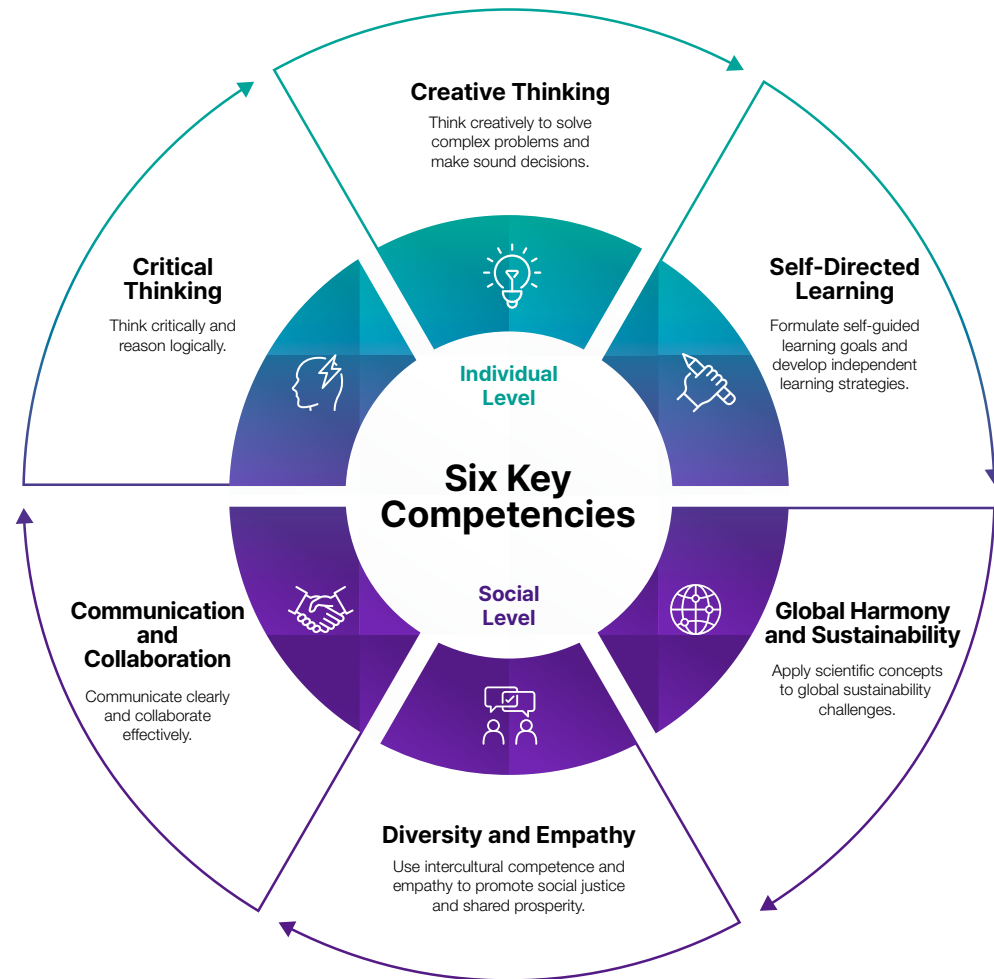


# Key Competency-Centered Curriculum

Our curriculum at Taejae University sets us apart from traditional universities that focus solely on conventional subjects like physics, chemistry, economics, politics, and philosophy. Instead, we prioritize the comprehensive development of students' problem-solving acumen and self-directed learning skills.

Our key competency-centered curriculum is characterized by its systematic, measurable, and adaptable nature. It has been thoroughly designed to meet the evolving needs of our students by blending competency-based learning with immersive global experiences. This unique method is continuously supported by enhancing students' learning journeys to uphold the highest educational standards.

In addition to fostering critical and creative thinking through our student-centered learning model, we aim to cultivate cooperative and harmonious individuals, capable of effective communication and collaboration. Diversity and empathy are also core values integral to our educational approach.





# Active Learning

At Taejae University, we redefine education through an innovative, student-centered approach that places Active Learning at its core. We ensure that every student receives the attention they deserve, with class sizes capped at a maximum of 20 students. All lectures are conducted entirely in English.

Before class, students engage in pre-learning activities utilizing various materials such as reading materials and video clips. During class, they participate in real-time online lectures to achieve their own learning objectives. Small group discussions and activities, facilitated by advanced digital tools, further enrich the learning experience. After class, students reflect on their learning through post-reading tasks and quizzes while completing assignments, including team projects and essays.

At every stage of their learning journey, students engage in close, real-time interaction with our world-renowned faculty. Serving not only as educators but also as facilitators, the faculty members actively encourage and guide students' learning process.



# Cutting-Edge Hybrid Campus Suited for Digital Society

Taejae University operates as an innovative hybrid campus of the 21<sup>st</sup> century, seamlessly integrating online and offline resources to meet the needs of the digital era.



**USA**  
Semester 3, 4



**Russia**  
Semester 7



**China**  
Semester 5, 6



**Korea**  
Semester 1, 2



**Japan**  
Semester 8



## Global Residential Campuses ■

Over the course of four years at Taejae University, students reside at residential campuses in five major countries across Korea, the United States, China, Japan, and Russia, fostering a sense of belonging and a supportive learning community. This immersive experience goes beyond traditional classroom education, allowing students to deepen their understanding of each country's politics, society, culture, and economy. Through living on these global residential campuses, students cultivate values of diversity, empathy, and global citizenship.

• Seoul Campus I Local Stitch Creator Seogyo Branch, 460-25 Seogyo-dong, Mapo-gu, Seoul



## University Headquarters ▲

Taejae Hall, the headquarters of Taejae University, is a modern glass structure integrated into the context of a traditional Korean *hanok*. The juxtaposition of Eastern architectural aesthetics with Western construction is a symbol of our university's mission to foster harmony between East and West. Taejae Hall was also inspired by the painting styles and furniture designs of ancient palaces and is complemented by a traditional Korean-style garden. The building was recognized with a 2005 Korean Architecture and Culture Award. Inside lies Baek Hongbeom's house, which dates back to the 1910s. It was designated as Folklore Cultural Property Number 13 in 1977 for preserving the elements of a traditional Korean small house.

• 22-8 Changdeokgung 5-gil, Jongno-gu, Seoul



## Public Encounter Center Student Recruiting Center ●

Hyehwa Hall serves as the administrative hub for Taejae University's Public Encounter Center and Student Recruiting Center. As the welcoming gateway to Taejae University, it embraces all visitors with warmth and hospitality. Prospective students seeking to begin their journey at Taejae University find support and guidance at Hyehwa Hall, where they can access a range of admissions consultations. Additionally, the hall serves as a platform for open communication with both domestic and international media, fostering engagement and interest in Taejae University.

• 133-1 Daehak-ro, Jongno-gu, Seoul





## Metaverse Campus



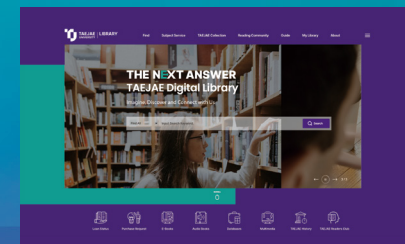
Taejae University's Metaverse Campus offers a futuristic campus life through cyberspace. The main campus, inspired by Taejae Hall and an old palace, serves as the symbolic heart of the virtual campus. Additionally, the second campus adopts a space station concept and features numerous buildings and spaces, including the university headquarters, over 900 virtual education and learning spaces, large-scale event halls, and personalized student spaces.



## Digital Library



The Taejae University Digital Library offers a cloud-based integrated platform, delivering personalized services through AI recommendation and decision-making systems. Equipped with a responsive web-based system and a powerful search engine, the library integrates search results from 47 web databases, including EBSCO, Kyobo E-book, and MOOC. This allows students to access a vast array of original texts at their convenience from any location. All books and journal articles are available in e-book format, with access to over 400,000 international e-books and over 70,000 Korean e-books through Web DB for borrowing and viewing.



## Online Education Platform



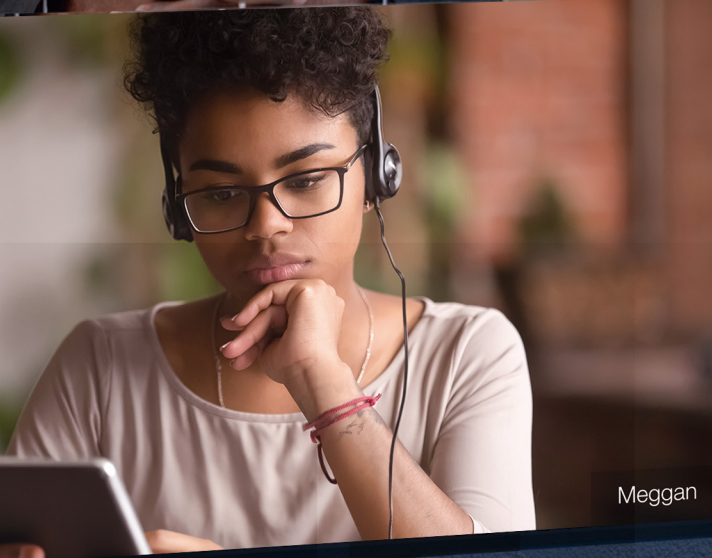
Taejae University leads the way in higher education by pioneering the integration of the online education platform Engageli into its classes, featuring real-time interactions and discussion-based learning. All classes are recorded, allowing immediate access to data on professors' and students' activities right after class. This enables faculty members and education experts to utilize class engagement monitoring, thereby enhancing the quality of students' learning experiences. Recorded videos with English subtitles are archived in the "Playback Room" for students seeking to review all lectures.







Michael Scott



Megan



Yejoon Song

Mays

### Lesson plan

Creative Thinking & Problem Solving  
SCAMPER

### Learning Objective

Lesson 10.

Discuss the SCAMPER method and use it to generate ideas and to improve designs, products or processes.

Lissa

Khal

Sooyeong





# Academics

Innovating Yourself and Shaping Tomorrow's World



Innovation  
Foundations



Humanities  
& Social Sciences



Natural  
Sciences



Data Science  
& Artificial Intelligence

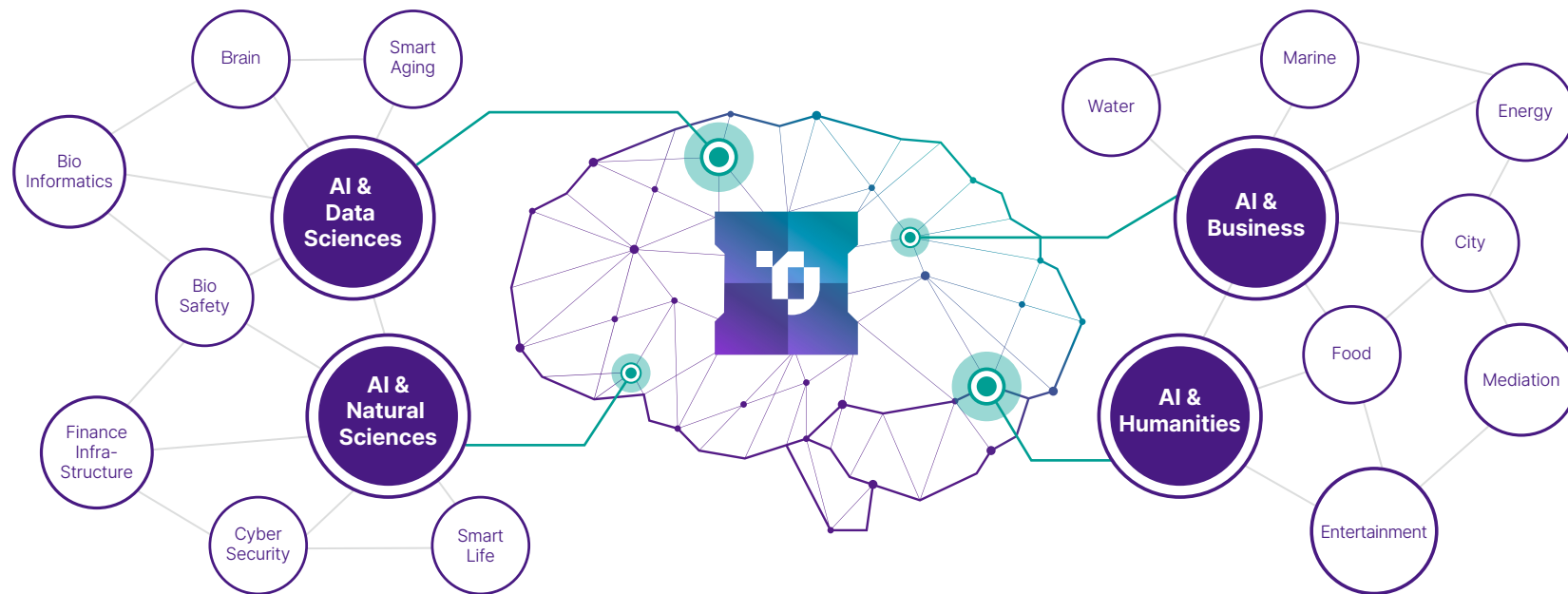


Business  
Innovation

Hiroshi

# AI-Incorporated Courses

Taejae University has designed and operates a curriculum system that integrates major courses with artificial intelligence, positioning itself at the forefront of the 21<sup>st</sup> century digital era.



## AI-embedded System Design

- Smart Living
- Media Creating
- AI-embedded Banking System
- Urban Environment Design and Sustainability
- AI and Architecture

## AI & Innovation Foundations

### 6 Key Competencies

- Critical Thinking
- Creative Thinking
- Self-directed Learning
- Communication and Collaboration
- Diversity and Empathy
- Global Harmony and Sustainability

### Curriculum

- Critical and Rational Thinking
- Creative Thinking and Problem Solving
- Motivation and Self-directed Learning
- Human Communication
- Diversity, Empathy and Global Citizenship
- Sustainability and Equity
- Data Analysis and Storytelling
- Judgment and Decision Making
- Leadership and Collaboration
- Navigating Social Systems



# Innovation Foundations Courses

The Innovation Foundations curriculum, completed in the first year, revolves around general education courses centered on six key competencies that Taejæ University aims to cultivate in its students. The topics and content of these courses are intricately connected to these competencies, with a focus on fostering a well-rounded understanding of major academic courses and fundamental aspects of human life. Additionally, students have the opportunity to enhance their skills by studying computer languages and second languages, such as Chinese, Japanese, and Russian, which are essential for global experiential learning.

## Major Courses

The School of Humanities and Social Sciences, the School of Natural Sciences, the School of Data Science and Artificial Intelligence, and the School of Business Innovation offer major courses that are aligned with six key competencies. Following the completion of major core courses in these schools during the first semester of the second year, students have the flexibility to select two or more majors based on their interests. This allows them to pursue a double major, a major and a minor, or a self-designed major that combines subjects from various schools.

Taejæ University's curriculum systematically integrates Innovation Foundations, Major courses, and Field Practice curricula. The curriculum culminates in 'Capstone Seminar' and 'Capstone Project' courses, where students engage in hands-on exploration of practical tasks, comprehensive structuring, and drawing conclusions. These projects are customized to each student's major field and desired career path, offering personalized guidance from distinguished faculty and renowned experts.





## Field Practice Courses

### Global Engagement



Taejae University offers global field experiential learning opportunities, aimed at providing students with a better understanding of the world, especially the four major powers surrounding the Korean Peninsula. Throughout their time at the university, students reside in five countries - Korea, the United States, China, Japan, and Russia - immersing themselves in the study of pivotal historical events and cultural contexts of each nation. Having a firm grasp of these countries' societies, cultures, and histories inspires and empowers the students to broaden their global perspectives and shape their goals for the future.

### Civic Project



The Civic Project is a curriculum designed to cultivate field-oriented problem-solving skills in students. It serves as an interdisciplinary, problem-based learning module that offers opportunities to delve deeper into real-world issues and integrate them with academic theory. By immersing themselves in the local cultures and societies, students investigate national or regional issues during this semester-long module. The project consists of faculty-led team projects, tailored to each team's professional interests and passions.

## Study Tour



The study tours are divided into two categories: global engagement study tours in each designated country, and special study tour in the United States and Europe. The special study tour program aims to equip students with foundational knowledge needed by global talents by providing direct exposure to modern innovation ecosystems and the origins of human civilization.

This program includes the Silicon Valley Study Tour, a three-week field study program that offers insights into cutting-edge industrial sites in Silicon Valley, USA, where global companies are concentrated.

The European Civilization Grand Tour encompasses Athens, Rome, Florence, Venice, and Istanbul-key locations in Greek, Roman, and Renaissance civilizations. This five-week grand tour program delves into the history and key of European civilization, including areas where Eastern and Western civilizations converge.

All students participating in the special study tours receive full scholarships to cover the associated costs.



Semester	Innovation Foundations and Major Courses				Field Practice Courses		Global Campus
1	Innovation Foundations (Required)				Global Engagement		Korea 🇰🇷
2	Innovation Foundations (Required, Elective)					Civic Project	Korea 🇰🇷
3	Major Core (HS)	Major Core (NS)	Major Core (DS&AI)	Major Core (BI)	Global Engagement		USA 🇺🇸
4	Major					Civic Project	USA 🇺🇸
					Silicon Valley Study Tour		
5	Major			Capstone Seminar I	Global Engagement		China 🇨🇳
6	Major			Capstone Seminar II		Civic Project	China 🇨🇳
7	Major			Capstone Seminar III	Global Engagement	Civic Project	Russia 🇷🇺
					European Civilization Grand Tour		
8	Major			Capstone Project	Global Engagement	Civic Project	Japan 🇯🇵

\* HS (Humanities and Social Sciences)  
\* NS (Natural Sciences)

\* DS&AI (Data Sciences and Artificial Intelligence)  
\* BI (Business Innovation)

\* Second languages (Chinese, Japanese, Russian)  
\* Global rotations and campuses are subject to change depending on local circumstances.



**Active.  
Experimental.  
Integral.**

**Learn.  
Reflect.  
Transform.**

**Comprehensive.  
Empirical.  
Problem-  
Solving.**

**Creative.  
Desirable.  
Human-  
centered.**

**Innovate.  
Adapt.  
Lead.**



**Innovation  
Foundations**



**Humanities and  
Social Sciences**



**Natural  
Sciences**



**Data Science and  
Artificial Intelligence**



**Business  
Innovation**

# Innovation Foundations

The School of Innovation Foundations prepares students to pursue whatever fields inspire them by developing a foundational set of cognitive and affective knowledge and skills, providing a framework for specialized study. In an era where 'doing' is more important than 'knowing', the curriculum also aims to develop basic capabilities that allow students to flexibly cope with and adapt to changes that they



will encounter throughout their lives. Centered around six key competencies, this holistic educational approach nurtures intellectually versatile individuals capable of global leadership. The School of Innovation Foundations strives to cultivate talents who will drive meaningful change by fostering critical and creative thinking, facilitating communication and collaboration across diverse cultures, and promoting empathy and emotional intelligence.

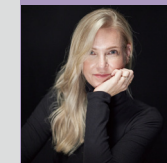
- Solve complex problems by thinking and judging analytically and systematically.
- Explore creative ideas and try innovative methods to come up with new solutions.
- Communicate effectively to understand others.
- Cultivate leadership that empathizes with diverse cultures, perspectives, and values and creates harmony and cooperation.
- Promote global social, economic, and environmental sustainability to accelerate human prosperity.
- Enhance curiosity, self-understanding, and self-directed learning as a lifelong learner.



“

The School of Innovation Foundations provides all students with the fundamental skills and knowledge they need to excel in whatever field they choose. Students learn to think critically and creatively, communicate and collaborate effectively, and continuously build their own expertise to navigate a rapidly changing world.

”



Dean of Innovation Foundations  
Professor Elizabeth P. Callaghan

Ph.D. University of Southern California  
English and Gender Studies



## Humanities and Social Sciences



The School of Humanities and Social Sciences is committed to cultivating forward-thinking leaders with a deep understanding of humanity and society. This major program offers three tracks: Humanities and Cultural Studies (HCS), Social Innovation and Governance (SIG), and Philosophy, Politics, and Economics (PPE). The HCS track is designed for students interested in showcasing their creative talents across various fields, including media, cultural

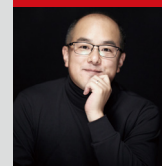
industries, public relations, marketing, arts, academia, and education. The SIG track is tailored for individuals aspiring to develop practical problem-solving skills to address real-world issues, driven by their passion for creating positive change. Aimed at those aspiring to leadership roles in government, public institutions, law, media, finance, and business sectors, the PPE track equips students with philosophical, economic, and political acumen, nurturing well-rounded visionaries for the future.

- Develop independent and critical perspectives and insights about humans and society.
- Think creatively about key concepts and theories in the chosen field of study and present solutions to real-world problems in innovative ways.
- Improve communication and collaboration skills through open discussion, respect, and empathy for others.
- Value diversity, empathy, and sustainability, and promote positive influence on global and local issues based on these values.
- Discover professional interests and talents through capstone seminars and projects, and acquire practical knowledge and experience.

“

The School of Humanities and Social Sciences emphasizes developing human skills that will become an important competitive edge in the AI era. We focus on a critical understanding of humanity and society, emotional intelligence, and advanced technology and communication skills to cultivate future-leading talents.

”



**Associate Dean of Humanities  
and Social Sciences**  
**Professor Jeongseok Lee**

Ph.D. Princeton University  
Public and International Affairs



## Natural Sciences

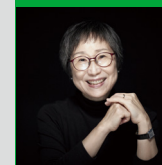


The School of Natural Sciences aims to comprehend the scientific and technological underpinnings of modern society and to cultivate individuals who can spearhead innovation across diverse fields in future society. To achieve this goal, a range of courses are offered covering fundamental theories, analysis, simulation, and integrated problem-solving within the realms of energy systems, life systems, and earth systems. Each semester, students engage in interdisciplinary convergence, producing results on various topics and advancing through modeling, virtual

lab design, and production. For major capstone projects, students have the opportunity to participate in projects with partner organizations or undertake global lab internships. Upon graduation, students are actively involved in research and policy development within academia and government agencies, as well as across various industrial sectors such as research and development, technical consulting, and healthcare. This is based on their expertise and experience gained through convergence projects in environmental science, life science, and energy fields.

- Develop a solid foundation in basic scientific knowledge for practical application, including problem-solving skills based on scientific theory, simulation technology, and effective communication.
- Acquire interdisciplinary convergence knowledge and critical thinking methods to address complex challenges in future society.
- Foster global participation and cultural awareness by understanding global issues and designing solutions using a scientific approach.
- Support students' unique interests and career goals through self-directed learning and personalized projects.

“ Students gain an understanding of the fundamental principles of nature through the study of interactions between human and nature, focusing on observable phenomena. The curriculum of the School of Natural Sciences, built on a foundation of innovation, offers an interdisciplinary approach designed to foster intellectual growth across a variety of scientific and technological disciplines. ”



**Dean of Natural Sciences**  
**Professor Jungmi Yang**

Ph.D. Brown University  
Chemistry

## Data Science and Artificial Intelligence



The curriculum of the School of Data Science and Artificial Intelligence comprises major subjects in three areas: artificial intelligence, data science, and computational applied mathematics. The curriculum allows students to explore the core principles of emerging technologies that will shape future capabilities, including machine learning,

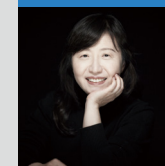
data analytics, and mathematical modeling, which serve as the foundations of artificial intelligence. In addition to acquiring technical expertise, the focus extends to understanding user-centric approaches, design thinking, and human-machine interactions, all of which are crucial for contributing to a more engaging and people-centered society.

- Demonstrate advanced technical expertise essential for designing and realizing a technology-driven future society, while acquiring a user-centered approach.
- Acquire comprehensive theoretical knowledge and application capabilities in data science and artificial intelligence.
- Strengthen key competencies and practical skills in computing technology through hands-on projects linked to field trips and civic projects at five campuses around the world, and experience the entire process of creating results through a capstone project upon graduation.
- Cultivate critical, creative, and convergent thinking skills to develop the ability to identify and solve complex problems in society and industry.

“

We aim to create a better world in the digital age. The curriculum of the School of Data Science and Artificial Intelligence focuses on nurturing talent prepared to take on future leadership roles during a period of great change in the history of human civilization with the advent of the digital revolution and artificial intelligence.

”



**Dean of Data Science  
and Artificial Intelligence**  
**Professor Jiyoung Kwahk**  
Ph.D. POSTECH  
Industrial Engineering



# Business Innovation

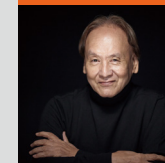


The School of Business Innovation is dedicated to fostering entrepreneurial thinking and nurturing students who can adeptly respond to the dynamic and ever-evolving business landscape. The school aims to cultivate future leaders capable of driving positive change and creating impactful ventures in the business world. The curriculum encompasses a wide range of fields including entrepreneurship, management, marketing, accounting, finance, and technology management, providing

students with a comprehensive understanding of the business environment. One of the key distinguishing features of the School of Business Innovation is its emphasis on experiential learning and hands-on projects. The school encourages students to tackle real-world business challenges, collaborate with industry partners, and even embark on their entrepreneurial ventures. This practical approach enables students to apply their knowledge in real-world scenarios, fostering creativity, problem-solving skills, and leadership capabilities.

- Cultivate entrepreneurial thinking essential for leadership.
- Develop the ability to adapt to a rapidly changing corporate environment and innovate management.
- Acquire strong leadership skills to effectively lead an organization.
- Enhance the ability to achieve great results through collaboration and networking with others.
- Foster respect for ethical and sustainable business practices.

“ Become the center of future business leaders. The curriculum of the School of Business Innovation prepares students to develop an entrepreneurial mindset that prioritizes innovation for the dynamics of the ever-evolving business world. ”



**Dean of Business Innovation**  
**Professor Young Won Ha**

Ph.D. The University of Chicago  
Business Administration





# Support

Ensuring Success at Every Stage  
of Your Academic Journey

Taejue University maximizes  
student success with tailored  
support from specialized  
organizations led by  
world-renowned experts.



Education Innovation  
Institute (EII)



Global Initiative  
Institute (GII)



Student Success  
Institute (SSI)



Global Language  
Center (GLC)

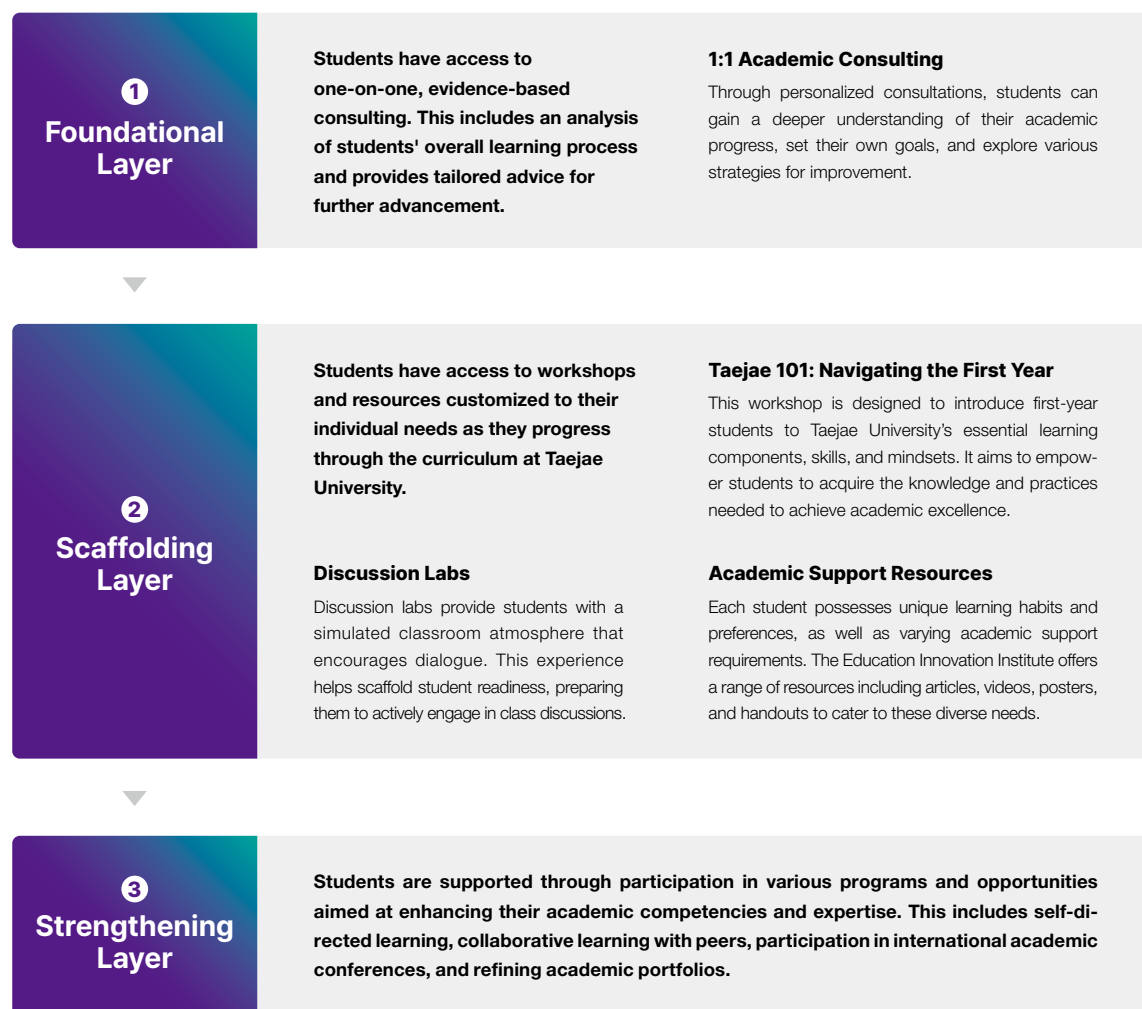




## Academic Excellence

Taejæ University offers customized student learning support programs tailored to individual needs, ranging from basic to advanced, depending on the curriculum. The **Education Innovation Institute (EII)** provides a variety of programs aimed at enhancing students' self-directed learning skills. These programs cover basic learning methods, active learning techniques, problem-based learning strategies, seminars, guidebooks, tutoring, and more. Moreover, during online lectures, students' class participation data are gathered, monitored, and analyzed to recommend tailored learning plans for optimal learning outcomes. This enables students to comprehend their individual learning patterns, undertake self-evaluation, and make efforts towards improvement for more effective learning. Additionally, Taejæ Discussion Lab sessions are offered to support students who may not be accustomed to discussion-based learning method.

### Three-Layer Academic Support Program





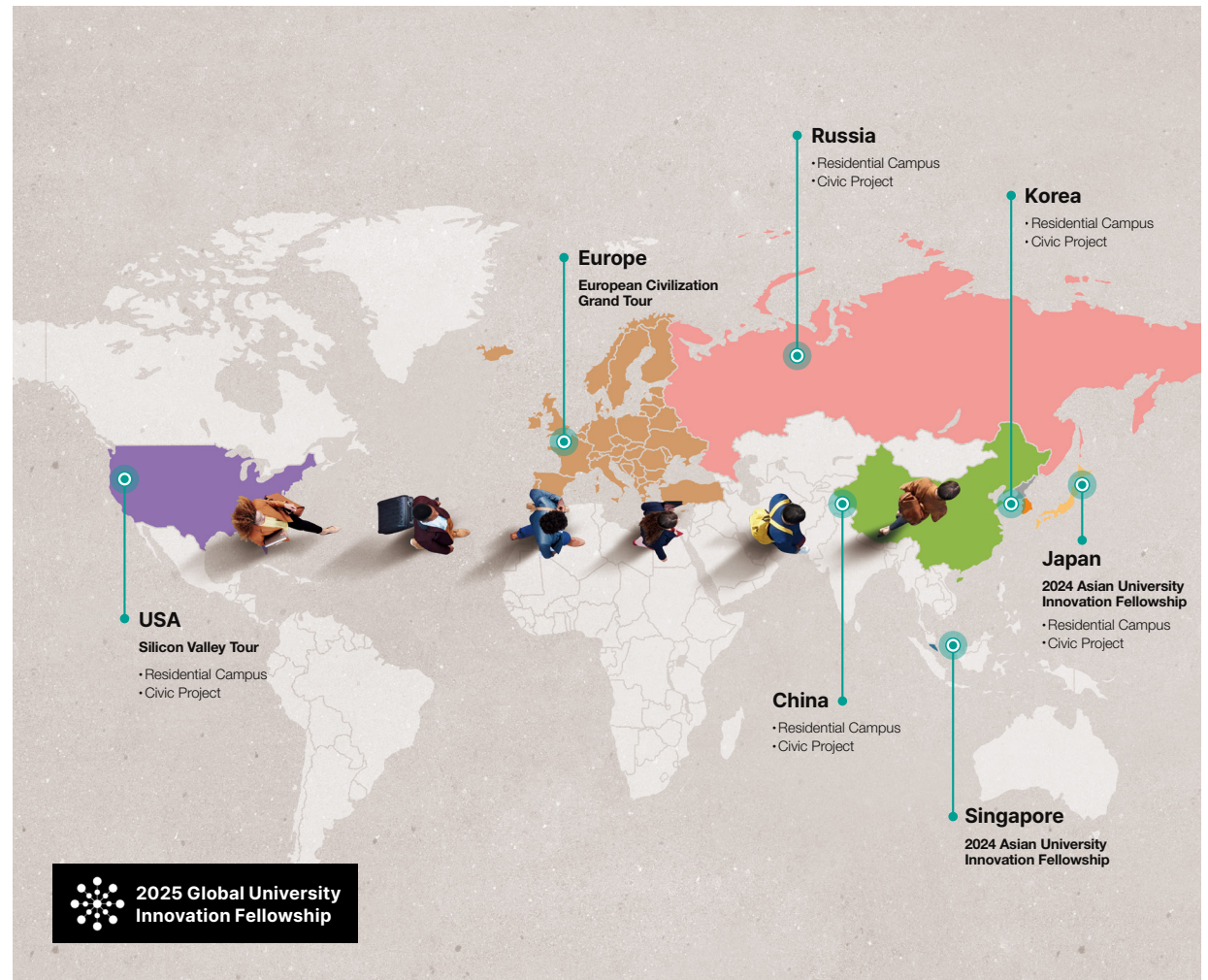
# Global Experience

Taejæ University promotes globalized learning among students through the **Global Initiative Institute (GII)**. Students are encouraged to actively plan, promote, and implement self-designed programs to develop a self-directed attitude, communication skills, and a global mindset. The GII supports students' global engagement programs, field courses and global rotation in five countries, facilitating their experiences on global residential campuses. Moreover, through the University Innovation Fellowship program, students can explore innovative systems and programs at universities worldwide, gaining insights beyond national borders. Interested students form groups, design projects, submit proposals, and undergo a rigorous selection process. The selected teams receive scholarships to cover related expenses and execute their projects.

Taejæ University supports students' academic presentations, contest participation, cultural tours, startup club activities, and volunteer work.



Illustration by Hyein Kim (Class of 2023)



## Student Success

Taejae University provides systematic programs to help students develop into well-rounded individuals equipped with self-competence, psychosocial skills, and global citizenship, in addition to the intellectual competencies gained through academic programs. The **Student Success Institute (SSI)** offers programs aimed at fostering self-competence and leadership skills to assist students in successfully navigating their coursework and college life. Additionally, wellness programs, including psychological testing and counseling, cater to students' emotional well-being. The SSI also conducts social value programs focusing on global citizenship issues and offers personalized career development programs to help students identify and pursue their aspirations. This holistic education system is a unique feature of Taejae University, designed to empower students with the capabilities required for global leadership.





# Language Proficiency

Taejae University established the **Global Language Center** to assist students in enhancing their academic abilities and effectively undertaking projects on the global campus. The center offers a range of language learning support programs, including English, second languages, and computer languages. These programs are available in the form of individual or small group coaching sessions during the semester or as workshops held during vacations.



## English



The English Language program promotes students' understanding of subjects taught in regular courses and strengthens their academic English skills necessary to progress to the level of study required in classes at English-speaking universities. Students engage in various learning activities such as discussions, presentations, and academic writing according to the individual needs and learning goals.

## Chinese



The Chinese Language program enables students to acquire skills to have basic conversations in various areas such as life, study, and work. Aiming to have students achieve Level 3 of the Mandarin Level Exam (Hanyu Shuiping Kaoshi, HSK), the program focuses on improving Chinese listening and speaking skills, as well as reading and writing skills, while also promoting a comprehensive understanding of Chinese language, society, culture, and economy.

## Japanese



The Japanese Language program is designed to enhance students' basic Japanese language skills, including speaking, listening, grammar, and writing, while also supporting them in achieving Level N4 or higher on the Japanese-Language Proficiency Test (JLPT). Additionally, the program aims to deepen students' understanding of Japanese society and culture.

## Russian



The Russian Language program aims to equip students with language skills equivalent to Level 1 on the Test of Russian as a Foreign Language (TORFL) within three semesters. In addition to language acquisition, the program offers insights into Russian society, culture, and history. Students also have opportunities to enhance their Russian language skills through exchanges with Russian students studying in Korea.

## Computer Language



The Computer Language program aims to enhance students' understanding of the characteristics of various computer languages and acquire basic knowledge about the elements necessary for application development in the IT field. The program focuses on practical application development using Python and ChatGPT.

# Scholarship

A Scholarship System That  
Nurtures, Incubates, Cares, and Encourages

  
Nurture

  
Incubate

  
Care

  
Encourage

Taejae University provides various scholarships to support students in becoming global talents, irrespective of financial limitations. These scholarships cover tuition, residence, and global engagement program fees. All students are fully supported for the costs of special study tours, such as the Silicon Valley Tour and the European Civilization Grand Tour. Furthermore, extracurricular activities, including academic presentations, contest participation, and cultural tours, are supported based on specific qualifications. Students can also receive living expense scholarships through the Work-Study system.

	Category	Coverage	Note
Taejae Talent Scholarship	Tuition	Full	<ul style="list-style-type: none"><li>• Korean students within the 5 income brackets out of 10.</li><li>• International students admitted up to the year 2025</li></ul>
Residence Scholarship	Residence	Full	<ul style="list-style-type: none"><li>• Korean students within the 5 income brackets out of 10.</li><li>• International students admitted up to the year 2025</li></ul>
Global Activity Scholarship	<ul style="list-style-type: none"><li>• Global Experience Activity</li><li>• Civic Project</li><li>• Global Engagement</li></ul>	Full	<ul style="list-style-type: none"><li>• Korean students within the 5 income brackets out of 10.</li><li>• International students admitted up to the year 2025</li></ul>
Work-Study Scholarship	Work-Study Activity	Selection Support	<ul style="list-style-type: none"><li>• Payment at an hourly rate during Work-Study activities</li></ul>
Study Tour Scholarship	Special Tours	Full	<ul style="list-style-type: none"><li>• Silicon Valley Tour</li><li>• European Civilization Grand Tour</li></ul>
Admissions Excellence Scholarship	Tuition	Full (for One Year)	<ul style="list-style-type: none"><li>• Students admitted with top grades</li></ul>

\* Korean students within the 5 income brackets: This refers to the calculation section based on the 'income recognition amount' of the Korea Student Aid Foundation.  
\* Each scholarship is offered according to the detailed criteria specified in the regulations of Taejae University after admission.



Taejae University extends its support for students through additional scholarship opportunities sourced from various external organizations and scholarship foundations, supplementing those provided by the university itself.

Taejae University operates a post-graduation scholarship program to assist students in advancing their careers after graduation. This program provides scholarships for graduates to pursue further studies at top-tier global graduate schools, to support employment opportunities at international organizations and non-governmental organizations, and to facilitate startup ventures. This support represents a unique and differentiated scholarship system offered exclusively by Taejae University.

	Category	Coverage	Note
Global Leader Support Scholarship	Global Leader Support	Selection Support	<ul style="list-style-type: none"><li>• Support career development activities at international organizations or NGOs after graduation</li></ul>
Entrepreneur Support Scholarship	Entrepreneur Support	Selection Support	<ul style="list-style-type: none"><li>• Support activities such as start-ups after graduation</li></ul>
Academic Success Scholarship	Academic Success Support	Selection Support	<ul style="list-style-type: none"><li>• Support studying in the top-tier global graduate schools after graduation</li></ul>



## Taejæ Global Eminent Scholar Fellow Council

To elevate the academic environment at Taejæ University and enrich students' academic journey, the Taejæ Global Eminent Scholar Fellow Council has been established. Comprising eminent scholars across diverse fields, this council provides students with exclusive opportunities to engage with scholars from around the globe through a curated series of lectures and seminars. Through these intimate encounters, Taejæ University students cultivate their aspirations toward global leadership.



**Young-Kee Kim**

- Professor, Department of Physics at the University of Chicago
- President of the American Physical Society (2024)
- Ph.D. The University of Rochester



**Marvin Chun** ...

- Professor, Department of Psychology at Yale University
- Ph.D. MIT



**Jin Hyung Lee** ...

- Professor, Neurology, Neurosurgery, and Bioengineering at Stanford University
- Ph.D. Stanford University



**Yutaka Tsujinaka** ...

- President of Toyo Gakuen University
- President of the Japanese Political Science Association (2014-2016)
- Ph.D. Kyoto University

“ With an innovative curriculum, interactive small classes, and a global community that can learn together in both the metaverse and global residential settings, Taejæ University is an exciting new institution not just for Korea but for the world. It should attract ambitious college students who want to make a difference. ”

**Marvin Chun**  
Professor, Department of Psychology  
at Yale University

“ A person's life is the result of the choices they make. I believe that education is about teaching people how to make the right choices along the journey of life. I look forward to Taejæ University becoming a great place of education that teaches future talents how to make excellent choices. ”

**Jin Hyung Lee**  
Professor, Neurology, Neurosurgery, and  
Bioengineering at Stanford University

“ My expectations regarding the new beginning at Taejæ University under Dr. Jaeho Yeom's visionary leadership is that this institution is set to revolutionize education in Asia and worldwide. I am confident that the team he leads will nurture a new generation of young, global intellectuals armed with innovative ideas and analytical acumen. Taejæ University is not just a university it is a transformative force, poised to navigate and triumph over the challenges of our complex world. ”

**Yutaka Tsujinaka**  
President of Toyo Gakuen University



# Taejae Future Education Forum

The Taejae Future Education Forum convenes annually to address education-related topics, pressing issues, and innovations in education on a global scale. Through comprehensive analyses and discussions, the forum seeks to navigate the ongoing educational revolution and shape new educational policies. Taejae University hosts the forum with the vision of establishing it as the educational equivalent of the Davos Forum, providing students with the opportunities to engage with scholars from around the world, as well as CEOs and COOs of leading global companies, during lectures and sessions.



## 2023 Main Speakers



**Eric Horvitz**  
Chief Scientific Officer  
of Microsoft



**Oren Etzioni**  
Founding CEO  
at Allen Institute for AI



**Daphne Koller**  
CEO and Founder  
of insitro, Co-founder  
of Coursera



**Stephen M. Kosslyn**  
Professor Emeritus  
at Harvard University



**John Katzman**  
CEO of Noodle  
and Education  
Entrepreneur



**Norman Atkins**  
Co-Founder and  
Managing Partner  
of Array Education



**Cristina Conati**  
Professor  
of Computer  
Science, University  
of British Columbia



**Aaron Rasmussen**  
Founder and CEO  
at Outlier



**Joshua Wohle**  
CEO of Mindstone



# Life at Taejae

Where Tomorrow's Change Makers Begin Their Journey









## Residential Campus Program

Taejae University students participate in a global community program, residing alongside classmates from diverse backgrounds at the Global Residential Campus. Through active interaction and cooperation, students engage with the local community and participate in various activities such as art, culture, and sports.

This program promotes academic achievement and emotional growth, fosters a sense of belonging and pride as Taejae members, and allows students to experience the evolution of another community's culture.







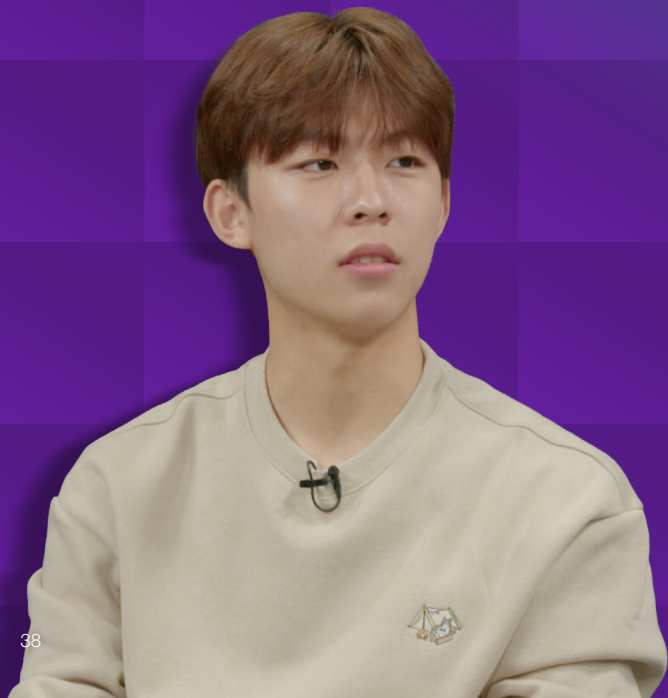


## “My First Semester at Taejæ”

“

At first, I was frustrated because of the language barrier. Now that the semester is over, I feel like my English skills have improved a lot. There were difficult moments while studying, but even though I thought it was difficult, I never felt unhappy. I believe these experiences are making me stronger and helping me grow.

”



“

There are about 16 students in each class, and professors give individual attention to every student. Communication channels with professors are open every hour without restrictions on location, so students can actively interact, ask questions, and learn. Even after class, I was able to enhance my learning through in-depth discussions with the professor.

”



“

Actually, I didn't anticipate taking such an intensive class on creative thinking and critical thinking. I am thankful for the opportunity to learn the methodological aspects of thinking, and I feel positive about the curriculum that focuses on acquiring skills necessary for adapting to changing times. I believe Taejæ University possesses a forward-thinking mindset that shapes the direction of education, adapting to the changing times. This is what sets Taejæ University apart.

”





“

While other universities offer exchange student programs for overseas experience to a limited number of students, Taejae University stands out by providing all students with the opportunity to share global experiences throughout their four years. This unique approach fosters greater synergy and collaboration among students.

”

“

I find Taejae campus life to be enjoyable and beneficial. Cooking meals together and sharing our daily experiences has brought me closer to my classmates and strengthened our bonds. Living in the global residential campuses together provides a great advantage, allowing us to get to know each other better and form a tight-knit community. We look forward to creating and recording our own shared culture as we continue to build our story together.

”





## **To Be a Global Leader**

Contributing to the Harmony of East and West

## **To Be a Future Leader**

Building a More Sustainable Society

## **To Be an Innovative Leader**

Leading a Long-lasting Society of the 21<sup>st</sup> Century



# To Those Who Dream of Joining Taejae

“ Please don't come to Taejae University with the idea that you have to be fully developed upon admission. There are many new things to learn and experiences to gain here. Within this Taejae community, you can broaden your horizons by encountering diverse perspectives. At Taejae University, I feel like I'm truly growing and learning the right things. So, when applying to Taejae University, don't focus on showcasing what you already have; instead, emphasize your dreams, goals, and how you envision further developing and growing within the university. I believe this approach aligns well with the direction of Taejae University. I'm also excited to see how I'll continue to grow throughout my journey at Taejae University. ”

**Class of 2023, Yijun Kim**

“ In October 2023, just a month after starting my studies, the Israel-Hamas war broke out while I was in Israel, forcing me to abruptly neglect my studies without knowing what will happen with it. I was worried I wouldn't be able to continue my studies due to the war, but Taejae University provided tailored support, sending letters multiple times, and offering supplementary academic assistance. My dream is to work in non-governmental organizations, bridging connections between people and building strong local communities. I aspire to serve as a bridge between Eastern and Western cultures. If you aspire to be a global leader contributing to a better world, I encourage you to join Taejae University. ”

**Class of 2023, Shahar Bezalel**

“ The deciding factor for choosing Taejae University was my strong desire to challenge my limits. Initially, I aimed to follow the typical path of graduating from a prestigious engineering school in the United States and securing a stable job. However, I realized the importance of taking the time to explore my true passions, rather than adhering to a predetermined path. I chose Taejae University because I wanted to grow within a supportive community and pursue genuine happiness. ”

**Class of 2023, Minwoo Choi**

“ The Global Engagement Program was the decisive reason for my enrollment at Taejae University. I regarded it as a rare opportunity to study in global cities and acquire new perspectives. I was particularly thrilled at the prospect of engaging in discussions with distinguished scholars and seeking solutions to global issues. Furthermore, Taejae supports career development after graduation, such as pursuing graduate studies or employment in international organizations. I believe there is no better opportunity in my life than to join Taejae University. ”

**Class of 2023, Lina Jellibi**

“Taejae will cultivate you into a global leader who not only achieves success socially and economically but also contributes to the advancement of future society.”





“This school isn't established solely for profit-making purposes. Taejae intends to support students not only during their time at the university but also as they pursue graduate studies or start their own businesses after graduation. Financial constraints should not prevent exceptional talent from attending.”

“They are global talents, future-oriented, and self-innovative individuals who are active worldwide. They must be able to creatively articulate their opinions with initiative.”

“The expenses for all of these Special Study Tour programs will be supported through scholarships. This means that the school covers the costs, allowing students to learn from the world.”

“Taejae University assesses students based on their potential. It will not necessarily select applicants who do not meet the standards just to fill the quota.”



**June-e Huh**  
Professor, Princeton University

KIAS Distinguished Professor, Korea Institute for Advanced Study  
Fields Medal, International Mathematical Union

$$\frac{f(b)-f(a)}{g(b)-g(a)} = \frac{1}{\chi} \quad y(0)=0$$

$$s_n = \sum_{n=0}^{\infty} \chi^n s_n = e^{\lim_{n \rightarrow \infty} (1 + \frac{1}{n})^n} y = ax^2 + bx + c$$

$$\int_0^s \mathcal{A}(\xi) d\xi$$

$$(uv)^{(n)}$$

“ Always begin again and maintain your sense of wonder and curiosity. Defend them against the day-to-day monotony and pressing demands of life. Stay undistracted, especially from your own ambitions that seem important. Trust that each day. ”

At the first Entrance Ceremony of Taejae University

**June-e Huh**

Professor, Princeton University  
Fields Medal, International Mathematical Union

$$(\int \mathcal{A}(s))' = \mathcal{A}(s)$$

THE

NEXT

ANSW



VER

*is*

*for*





[www.taejae.ac.kr](http://www.taejae.ac.kr)  
General | [info@taejae.ac.kr](mailto:info@taejae.ac.kr)  
Student Recruitment | [osr@taejae.ac.kr](mailto:osr@taejae.ac.kr)